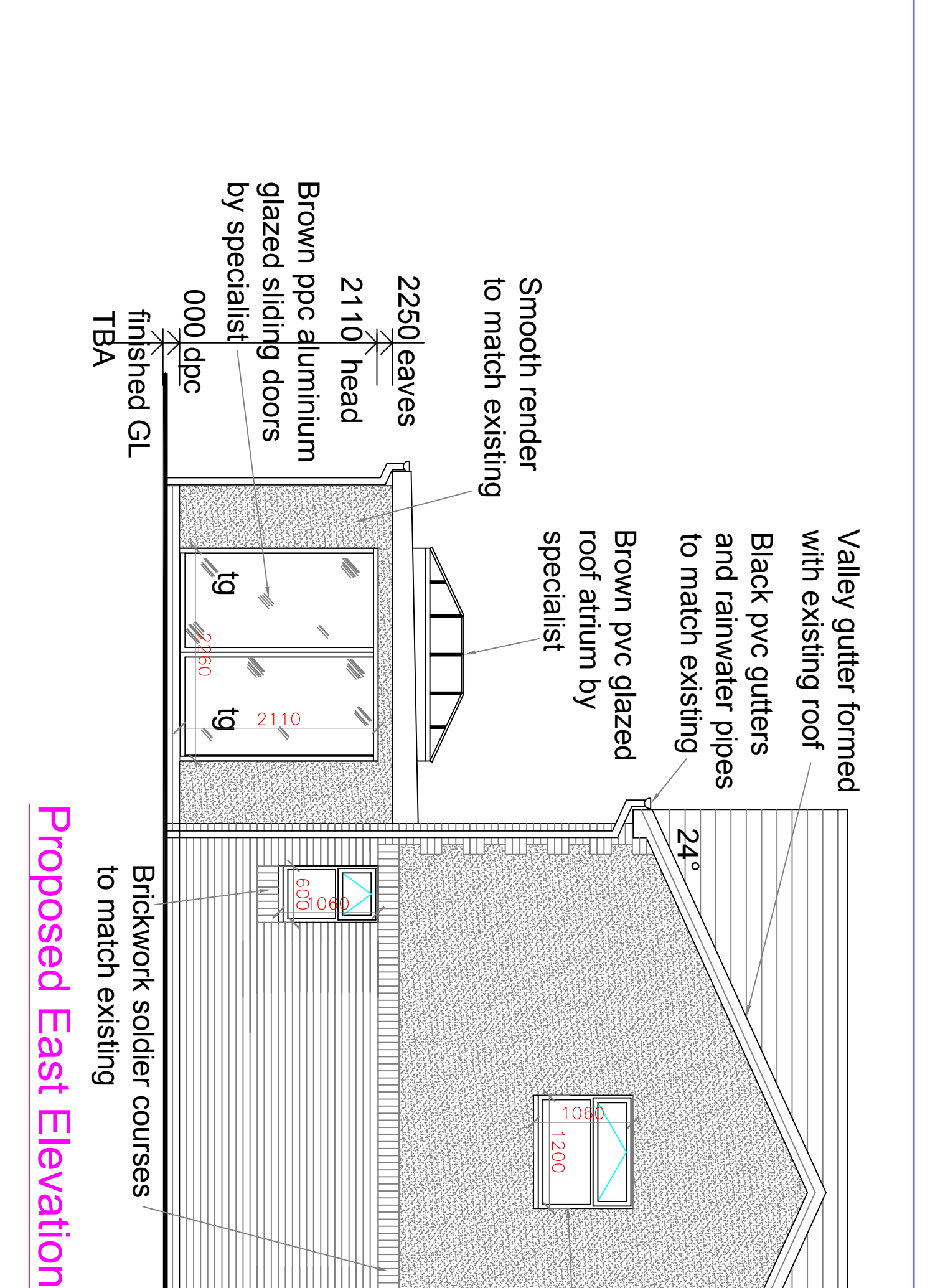
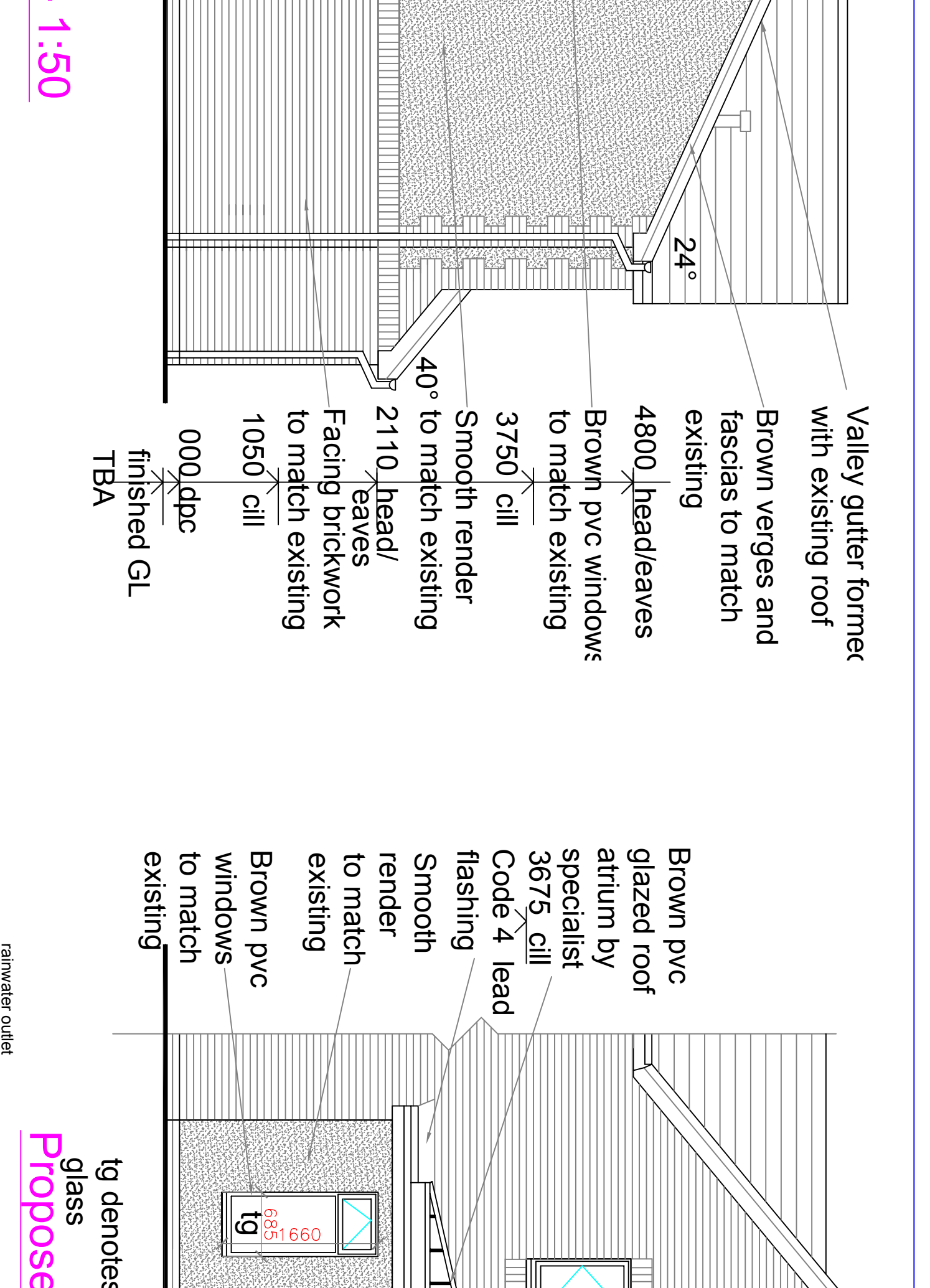


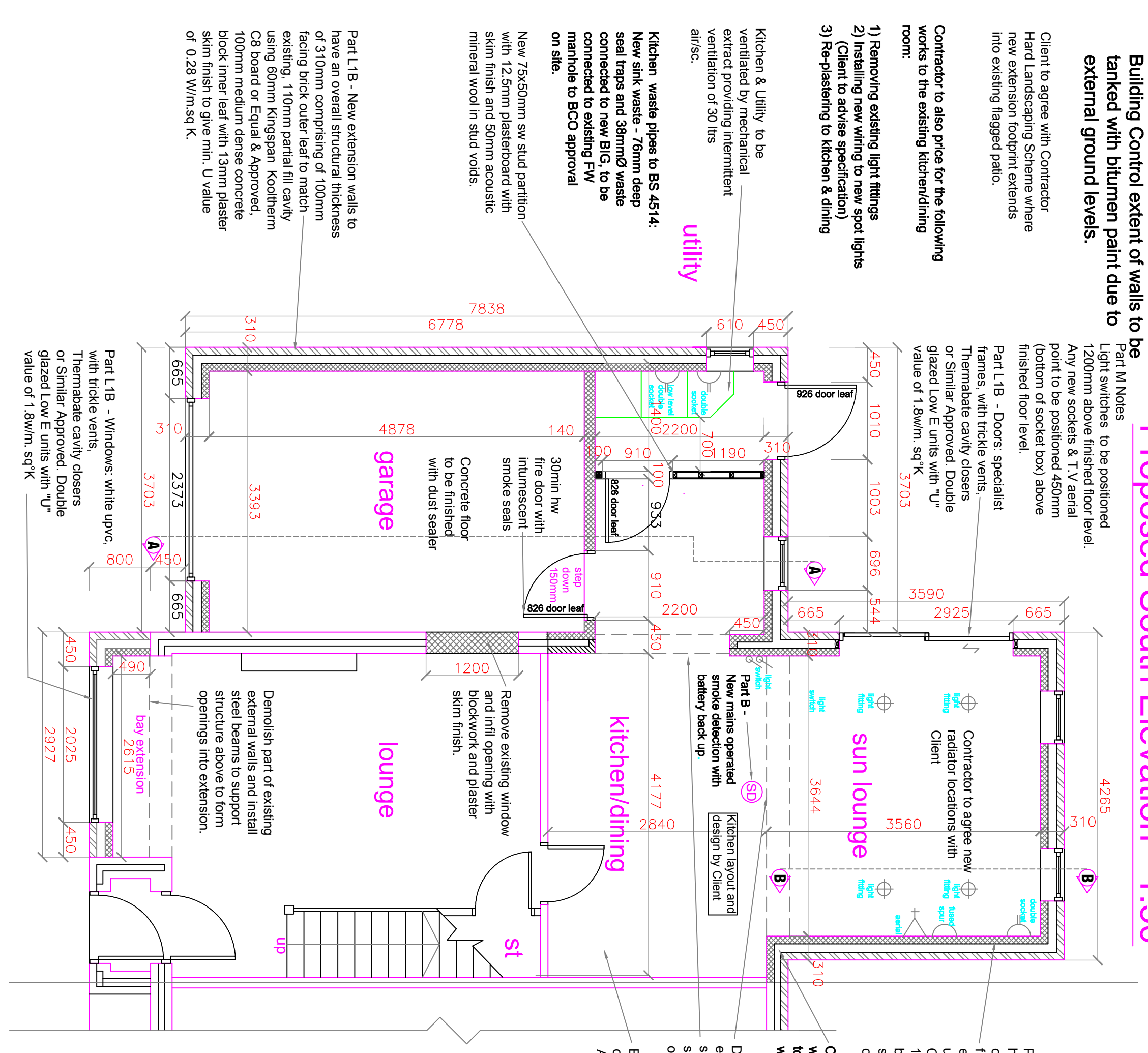
Proposed South Elevation - 1:50



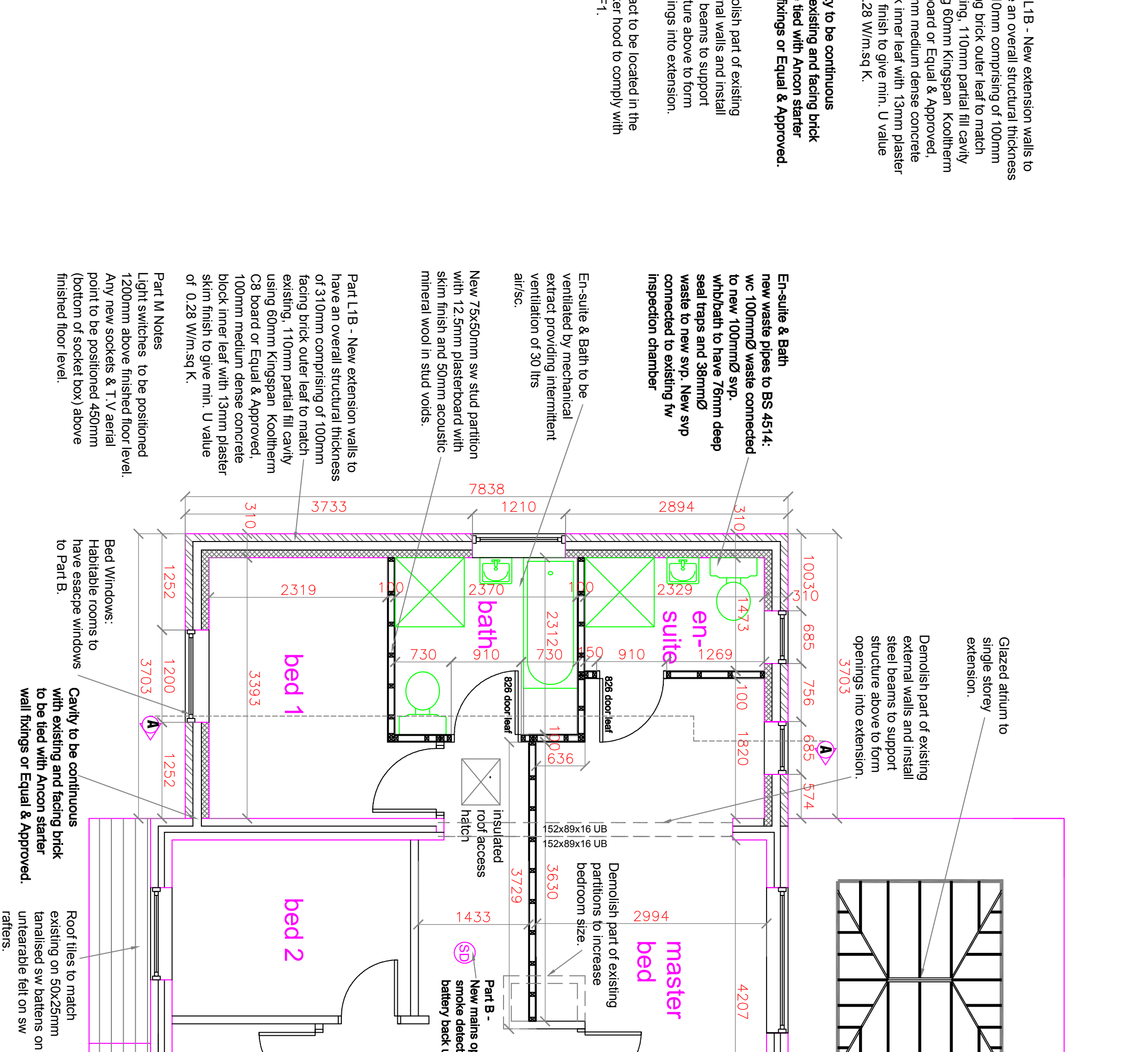
Proposed East Elevation - 1:50



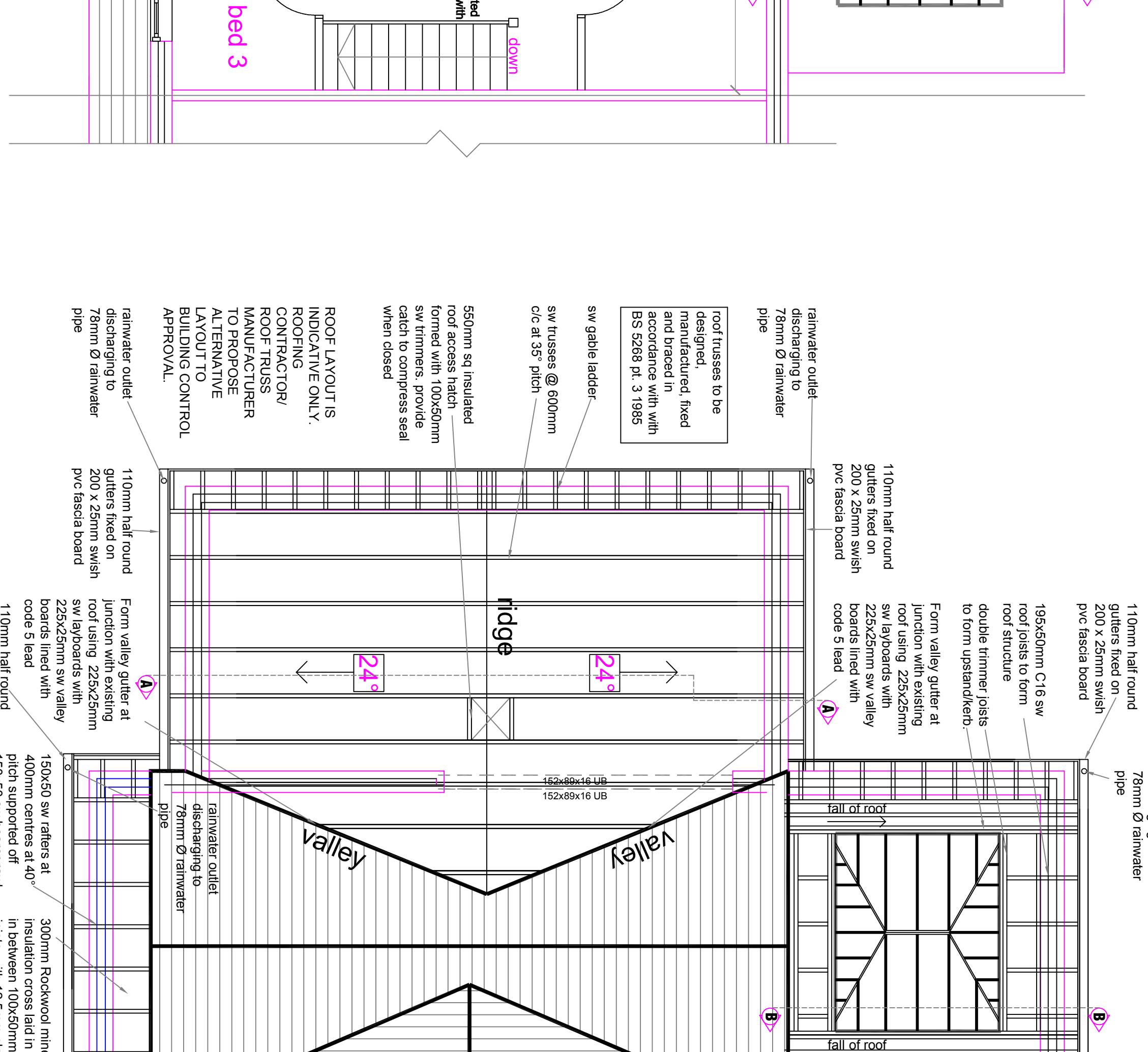
Proposed North Elevation - 1:50



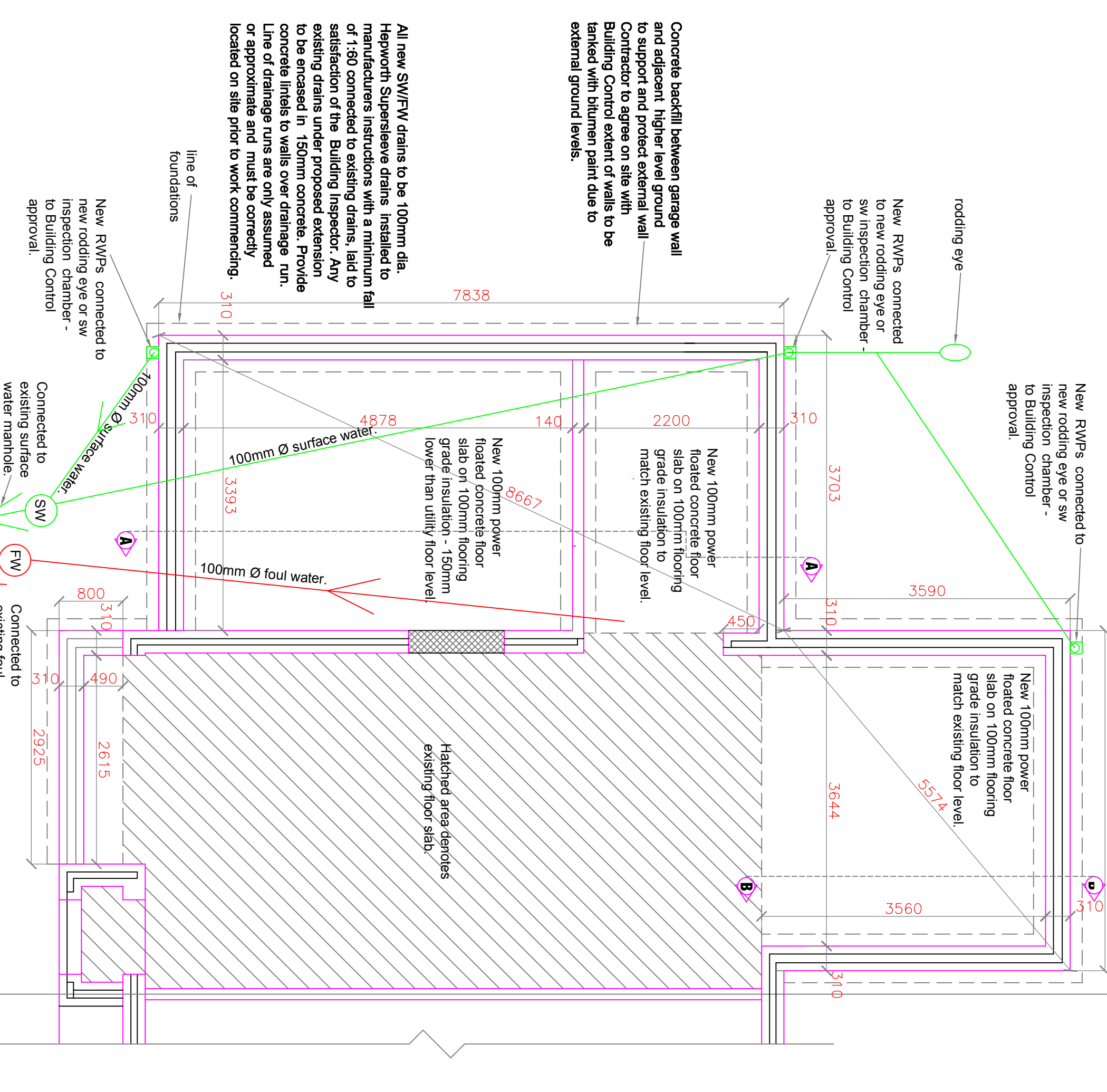
Proposed Ground Floor Plan - 1:50



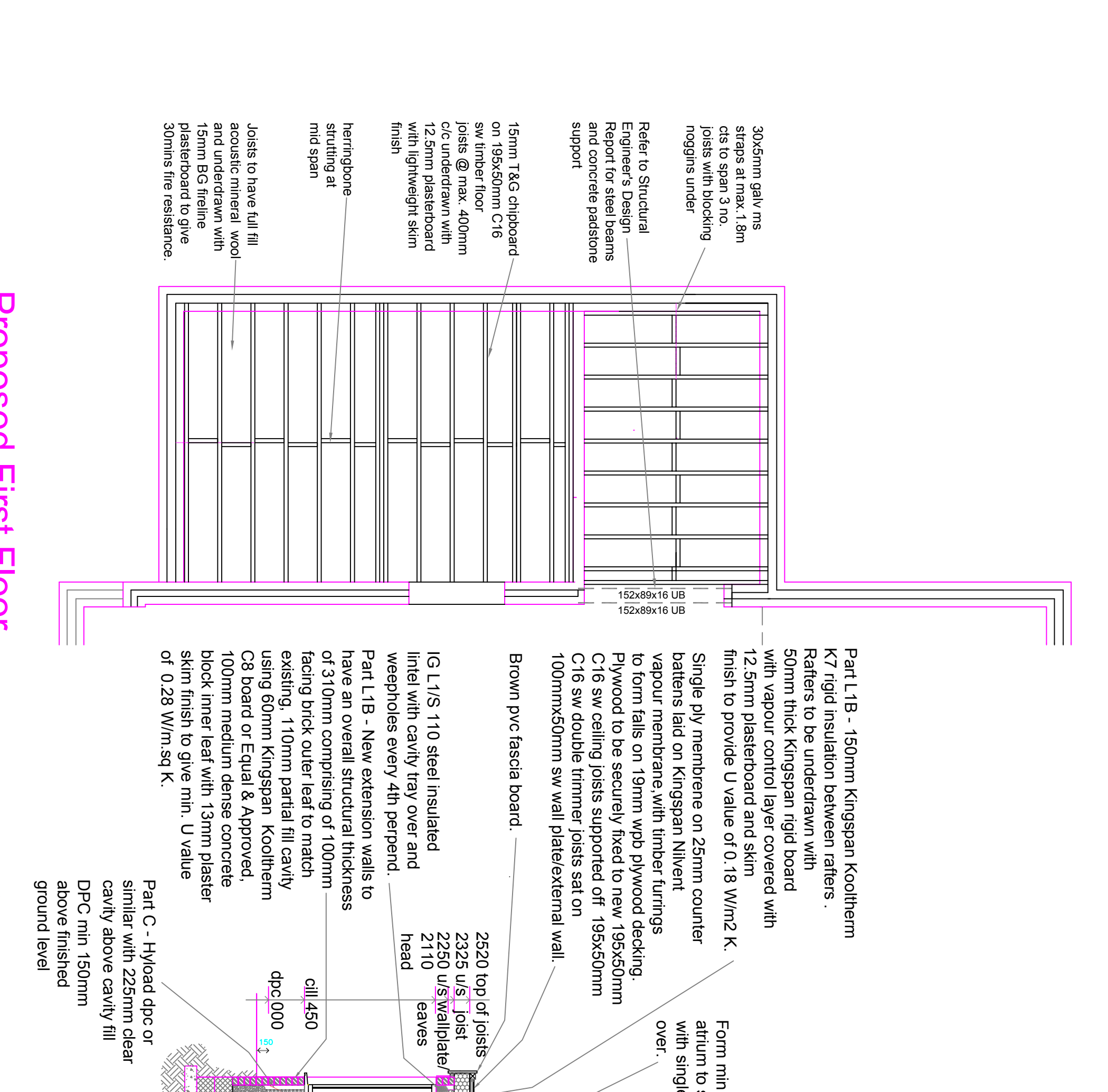
Proposed First Floor Plan - 1:50



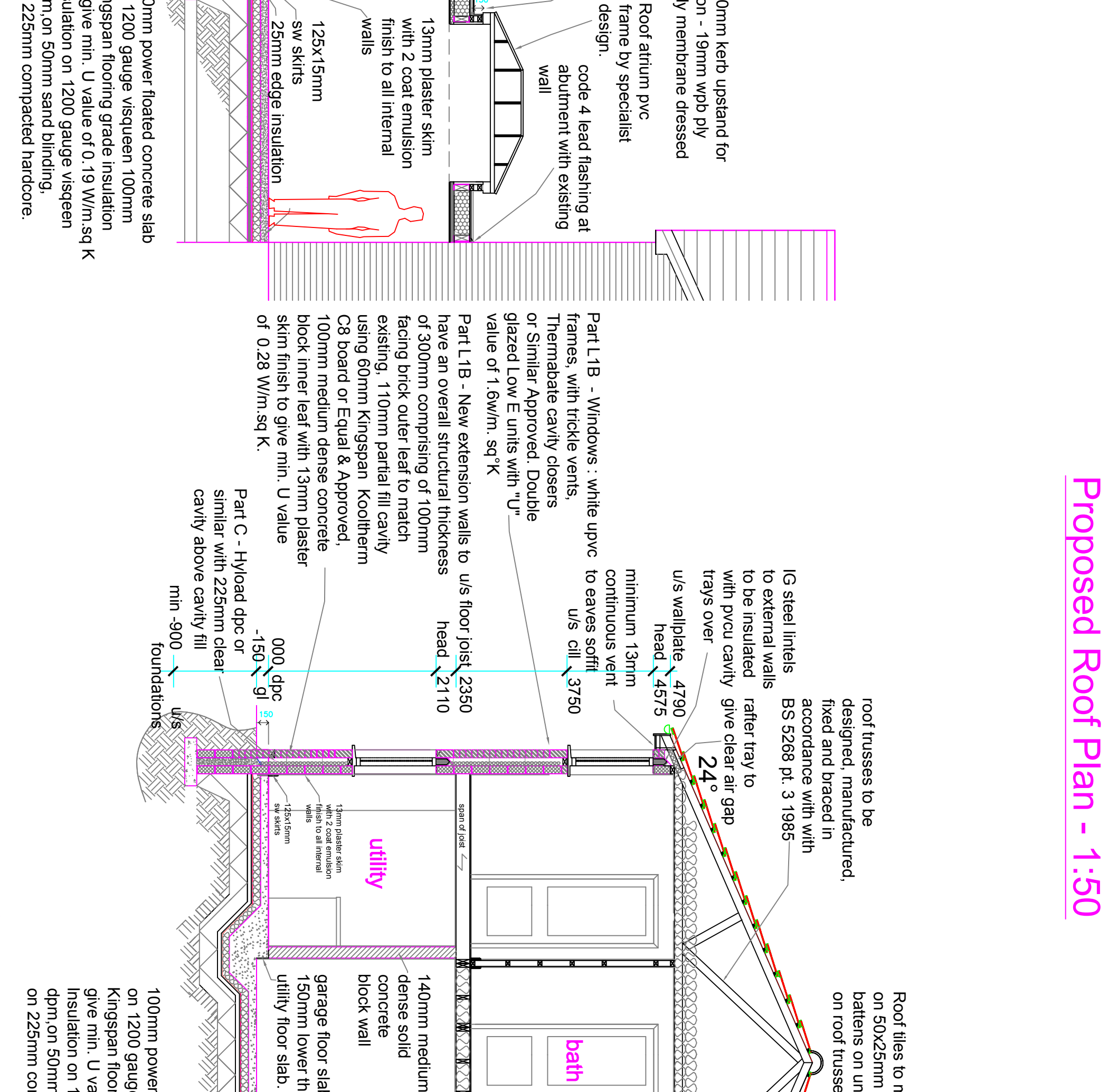
Proposed Roof Plan - 1:50



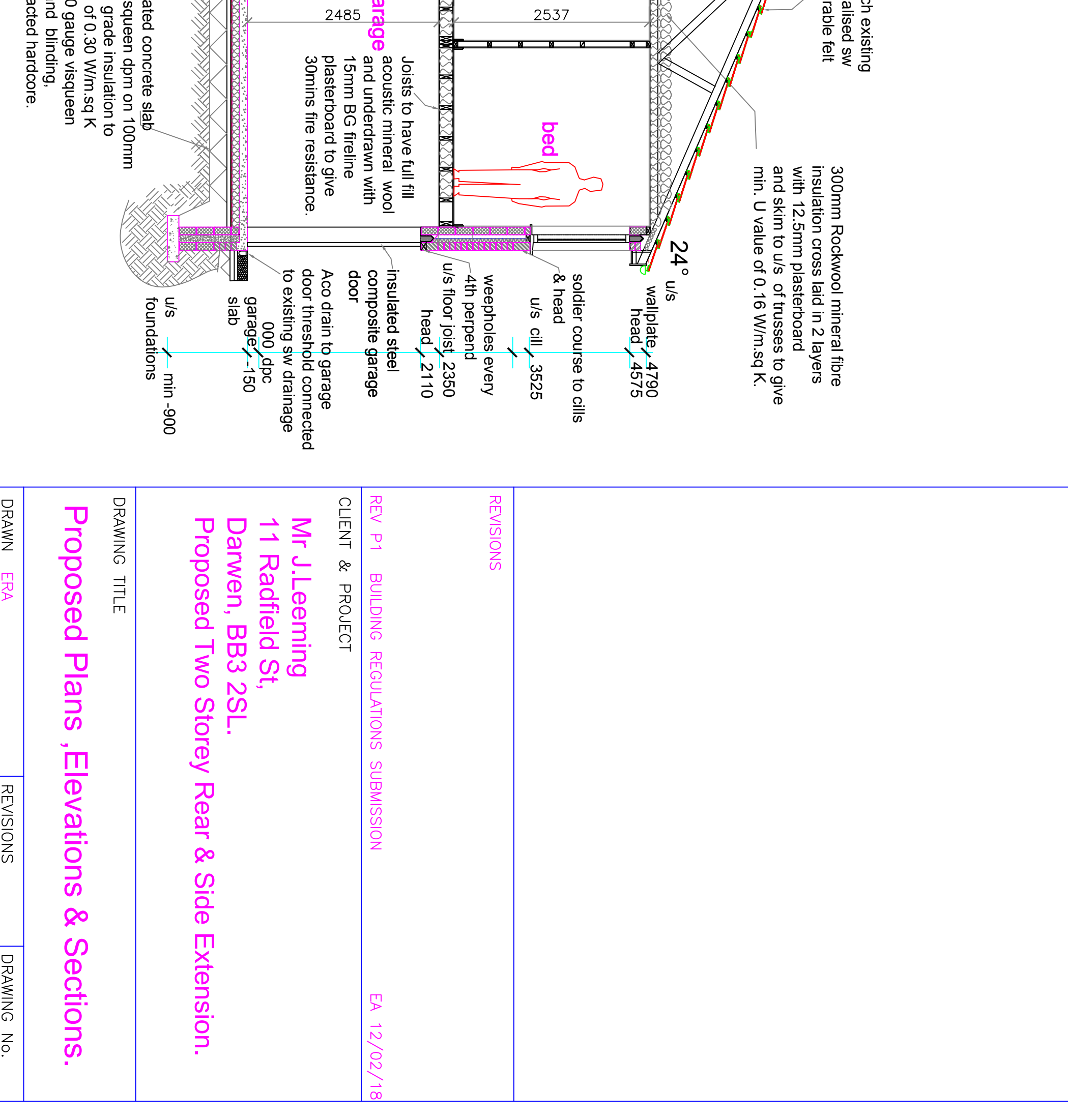
Proposed Foundation Plan - 1:50



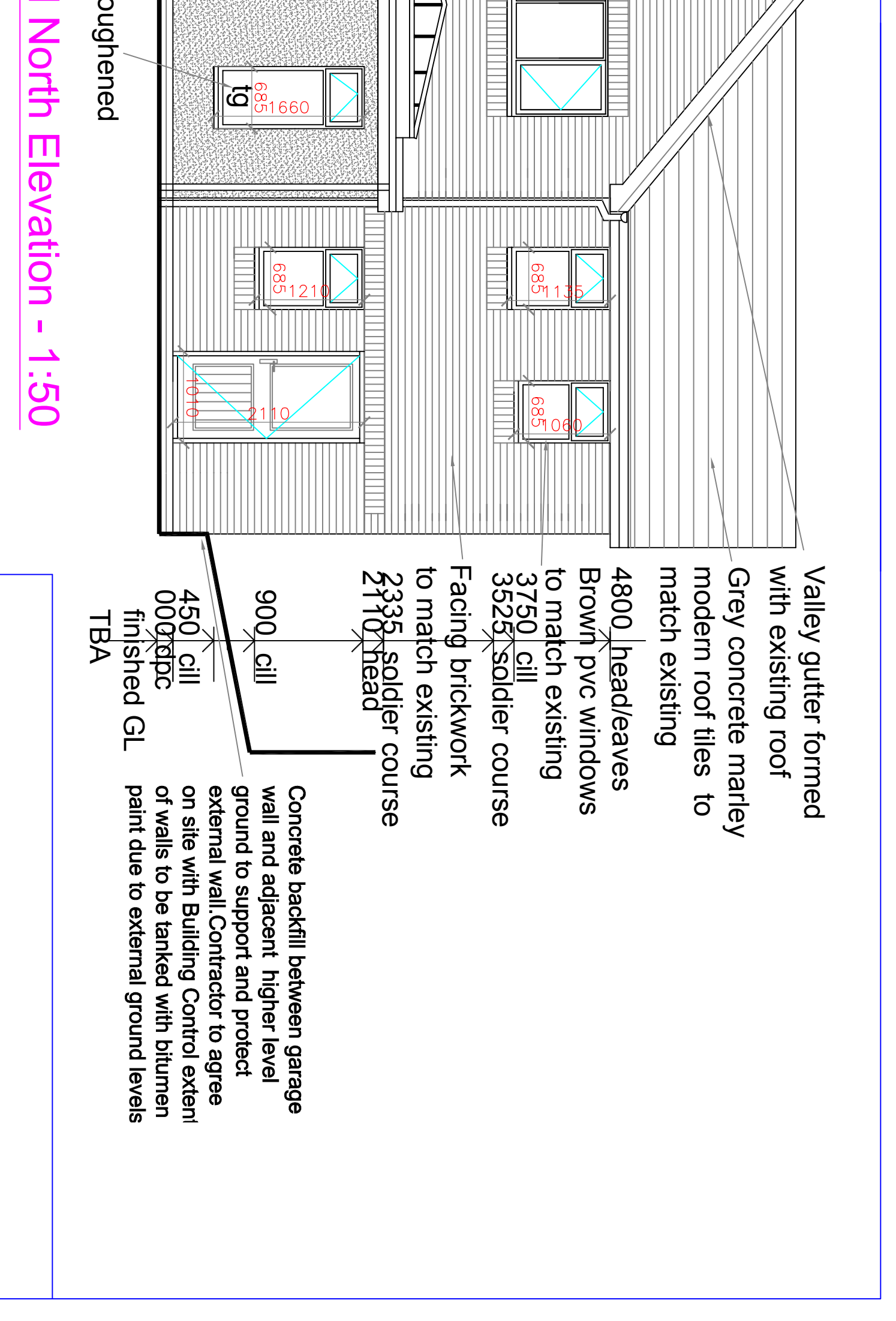
Proposed Joist Plan - 1:50



Section B-B - 1:50



Section A-A - 1:50



Proposed Section AA - 1:50

CONSTRUCTION NOTES:  
All sizes and dimensions to be checked on site prior to work commencing. All workmanship and materials to comply with Building Regulations, British Standards and other relevant codes of practice. The Contractor shall ensure that all materials used are of the correct specification and that all work is carried out in accordance with the Building Regulations.  
FOUNDATIONS: - to comply with BS 5268:1:2001. Foundations to be designed and constructed in accordance with BS 5268:1:2001. Foundations to be designed and constructed in accordance with BS 5268:1:2001.  
EXTERIOR WALLS: - to comply with BS 5268:1:2001. Exterior walls to be designed and constructed in accordance with BS 5268:1:2001. Exterior walls to be designed and constructed in accordance with BS 5268:1:2001.  
ROOF TRUSSES: - to comply with BS 5268:1:2001. Roof trusses to be designed and constructed in accordance with BS 5268:1:2001. Roof trusses to be designed and constructed in accordance with BS 5268:1:2001.  
FLOORING: - to comply with BS 5268:1:2001. Flooring to be designed and constructed in accordance with BS 5268:1:2001. Flooring to be designed and constructed in accordance with BS 5268:1:2001.  
GLAZING: - to comply with BS 5268:1:2001. Glazing to be designed and constructed in accordance with BS 5268:1:2001. Glazing to be designed and constructed in accordance with BS 5268:1:2001.  
WATERPROOFING: - to comply with BS 5268:1:2001. Waterproofing to be designed and constructed in accordance with BS 5268:1:2001. Waterproofing to be designed and constructed in accordance with BS 5268:1:2001.  
INSULATION: - to comply with BS 5268:1:2001. Insulation to be designed and constructed in accordance with BS 5268:1:2001. Insulation to be designed and constructed in accordance with BS 5268:1:2001.  
MECHANICAL SERVICES: - to comply with BS 5268:1:2001. Mechanical services to be designed and constructed in accordance with BS 5268:1:2001. Mechanical services to be designed and constructed in accordance with BS 5268:1:2001.  
ELECTRICAL SERVICES: - to comply with BS 5268:1:2001. Electrical services to be designed and constructed in accordance with BS 5268:1:2001. Electrical services to be designed and constructed in accordance with BS 5268:1:2001.  
PLUMBING SERVICES: - to comply with BS 5268:1:2001. Plumbing services to be designed and constructed in accordance with BS 5268:1:2001. Plumbing services to be designed and constructed in accordance with BS 5268:1:2001.  
HEATING SERVICES: - to comply with BS 5268:1:2001. Heating services to be designed and constructed in accordance with BS 5268:1:2001. Heating services to be designed and constructed in accordance with BS 5268:1:2001.  
VENTILATION SERVICES: - to comply with BS 5268:1:2001. Ventilation services to be designed and constructed in accordance with BS 5268:1:2001. Ventilation services to be designed and constructed in accordance with BS 5268:1:2001.  
SOUND INSULATION SERVICES: - to comply with BS 5268:1:2001. Sound insulation services to be designed and constructed in accordance with BS 5268:1:2001. Sound insulation services to be designed and constructed in accordance with BS 5268:1:2001.  
FIRE PROTECTION SERVICES: - to comply with BS 5268:1:2001. Fire protection services to be designed and constructed in accordance with BS 5268:1:2001. Fire protection services to be designed and constructed in accordance with BS 5268:1:2001.  
ACCESSIBILITY SERVICES: - to comply with BS 5268:1:2001. Accessibility services to be designed and constructed in accordance with BS 5268:1:2001. Accessibility services to be designed and constructed in accordance with BS 5268:1:2001.  
ENVIRONMENTAL SERVICES: - to comply with BS 5268:1:2001. Environmental services to be designed and constructed in accordance with BS 5268:1:2001. Environmental services to be designed and constructed in accordance with BS 5268:1:2001.  
ENERGY EFFICIENCY SERVICES: - to comply with BS 5268:1:2001. Energy efficiency services to be designed and constructed in accordance with BS 5268:1:2001. Energy efficiency services to be designed and constructed in accordance with BS 5268:1:2001.  
SUSTAINABILITY SERVICES: - to comply with BS 5268:1:2001. Sustainability services to be designed and constructed in accordance with BS 5268:1:2001. Sustainability services to be designed and constructed in accordance with BS 5268:1:2001.  
SMART BUILDING SERVICES: - to comply with BS 5268:1:2001. Smart building services to be designed and constructed in accordance with BS 5268:1:2001. Smart building services to be designed and constructed in accordance with BS 5268:1:2001.  
DIGITAL SERVICES: - to comply with BS 5268:1:2001. Digital services to be designed and constructed in accordance with BS 5268:1:2001. Digital services to be designed and constructed in accordance with BS 5268:1:2001.  
SECURITY SERVICES: - to comply with BS 5268:1:2001. Security services to be designed and constructed in accordance with BS 5268:1:2001. Security services to be designed and constructed in accordance with BS 5268:1:2001.  
SAFETY SERVICES: - to comply with BS 5268:1:2001. Safety services to be designed and constructed in accordance with BS 5268:1:2001. Safety services to be designed and constructed in accordance with BS 5268:1:2001.  
COMFORT SERVICES: - to comply with BS 5268:1:2001. Comfort services to be designed and constructed in accordance with BS 5268:1:2001. Comfort services to be designed and constructed in accordance with BS 5268:1:2001.  
CONVENIENCE SERVICES: - to comply with BS 5268:1:2001. Convenience services to be designed and constructed in accordance with BS 5268:1:2001. Convenience services to be designed and constructed in accordance with BS 5268:1:2001.  
QUALITY SERVICES: - to comply with BS 5268:1:2001. Quality services to be designed and constructed in accordance with BS 5268:1:2001. Quality services to be designed and constructed in accordance with BS 5268:1:2001.  
CUSTOMER SERVICE SERVICES: - to comply with BS 5268:1:2001. Customer service services to be designed and constructed in accordance with BS 5268:1:2001. Customer service services to be designed and constructed in accordance with BS 5268:1:2001.  
REPUTATION SERVICES: - to comply with BS 5268:1:2001. Reputation services to be designed and constructed in accordance with BS 5268:1:2001. Reputation services to be designed and constructed in accordance with BS 5268:1:2001.  
BRAND SERVICES: - to comply with BS 5268:1:2001. Brand services to be designed and constructed in accordance with BS 5268:1:2001. Brand services to be designed and constructed in accordance with BS 5268:1:2001.  
MARKETING SERVICES: - to comply with BS 5268:1:2001. Marketing services to be designed and constructed in accordance with BS 5268:1:2001. Marketing services to be designed and constructed in accordance with BS 5268:1:2001.  
SALES SERVICES: - to comply with BS 5268:1:2001. Sales services to be designed and constructed in accordance with BS 5268:1:2001. Sales services to be designed and constructed in accordance with BS 5268:1:2001.  
DISTRIBUTION SERVICES: - to comply with BS 5268:1:2001. Distribution services to be designed and constructed in accordance with BS 5268:1:2001. Distribution services to be designed and constructed in accordance with BS 5268:1:2001.  
RETAIL SERVICES: - to comply with BS 5268:1:2001. Retail services to be designed and constructed in accordance with BS 5268:1:2001. Retail services to be designed and constructed in accordance with BS 5268:1:2001.  
WHOLESALE SERVICES: - to comply with BS 5268:1:2001. Wholesale services to be designed and constructed in accordance with BS 5268:1:2001. Wholesale services to be designed and constructed in accordance with BS 5268:1:2001.  
SERVICES: - to comply with BS 5268:1:2001. Services to be designed and constructed in accordance with BS 5268:1:2001. Services to be designed and constructed in accordance with BS 5268:1:2001.

DRAWING TITLE	PROPOSED PLANS, ELEVATIONS & SECTIONS.
CLIENT & PROJECT	Mr J Leeming 11 Radfield St, Darwen, B33 2SL.
REVISED	Proposed Two Storey Rear & Side Extension.
REVISIONS	
DATE	12/02/2018
SCALE	1:100/1:50/1:20 @ 40